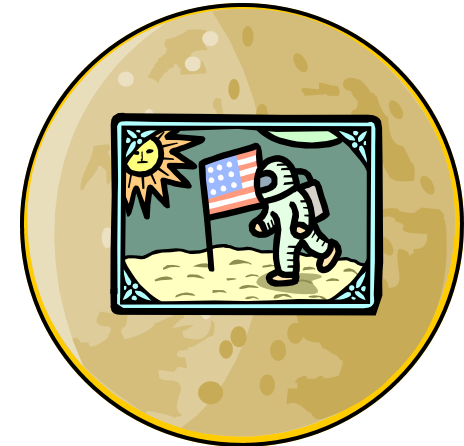
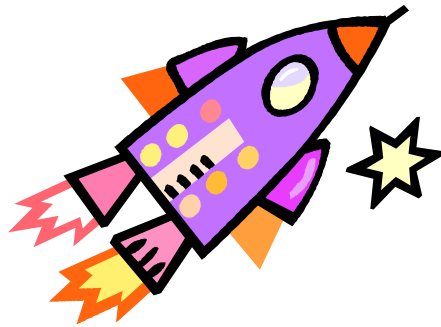




Race To The Moon



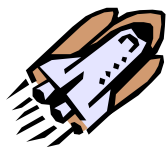
Playing Directions When Using Question Cards: Place pawns on “Blast Off”. Put *Question Cards* in one pile with the questions facing up. Players take turns rolling the die and moving around the game board. If a player lands on a star, the player takes the top card from the *Question Card* pile and gives the answer. Then check the back of the card. If the answer is correct, the player stays on the space where he/she landed. If the answer is wrong, the player goes back to the space the player just came from. The first player to reach the moon is the winner. A player does not have to roll the exact number to win the game. More than one player may occupy the same square.

Playing Directions When Using Hebrew Alefbet or Prayer cards: Use Hebrew alefbet or prayer cards for *Question Cards*. When the player lands on a star, the player identifies the Hebrew letter or reads a prayer phrase.

Created by Central Agency for Jewish Education, 12 Millstone Campus Dr., St. Louis, MO 63146 Tel: 314 432-0020

This game may be found and reproduced from our website: cajestl.org (Teachers/Cutter Creativity Center).

CAJE is a beneficiary agency of the Jewish Federation of St. Louis

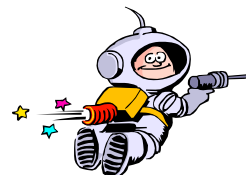


Out of orbit!

Lose 1 turn.

Full speed ahead!

Go up 1 space.

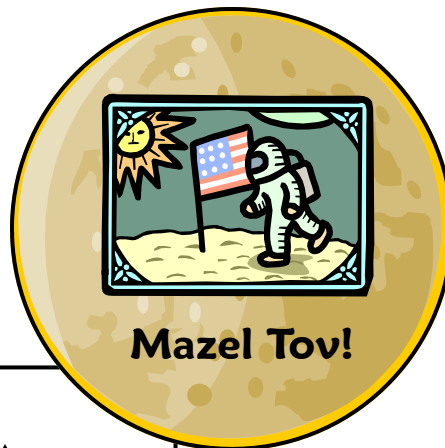


Asteroid crash!

Go back 2 spaces.



Race To The Moon



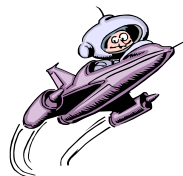
Mazel Tov!



Stop for walk in space!

Lose 1 turn.

Break sound barrier!
Go ahead 2 spaces.



You entered a black hole!

Go back 2 spaces.



Making good time!

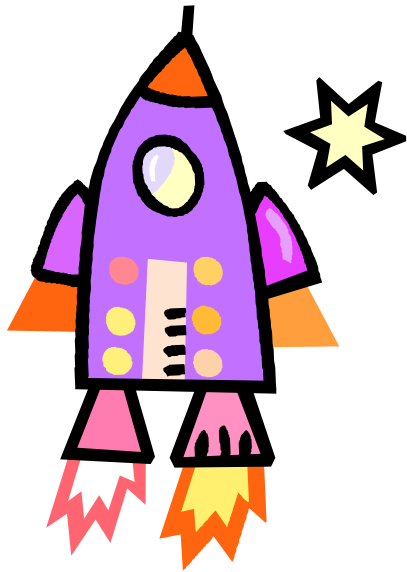
Move ahead 1 space.



**Boosters
won't fire!**
Start over!

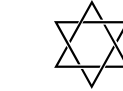


**BLAST
OFF**



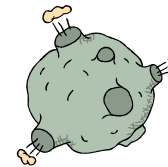
**Stop
to eat!**

Lose 1 turn



**Friendly
aliens!**

Go ahead
2 spaces.



**Alien
attack!**

Go back 2 spaces.

